



ACADEMIC & LEADERSHIP SERVICES

DEPUTY SUPERINTENDENT
DR. NICHOLAS KING

ADMINISTRATIVE ASSISTANT
QUANITA AVERY

BUDGET ANALYST
VICTORIA HENDERSON

ASSISTANT SUPERINTENDENT, SPECIALIZED SERVICES
DEBORAH POLEN-PITMAN, Ph.D

SENIOR EXECUTIVE DIRECTOR, STUDENT SUPPORT SERVICES
LAVERNE MATTOCKS-PERRY, Ed.D

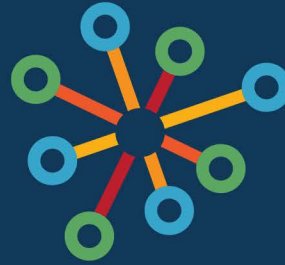
EXECUTIVE DIRECTOR, ELEMENTARY CURRICULUM & INSTRUCTION
LINDA TUGURIAN, Ph.D
EXECUTIVE DIRECTOR, MIDDLE SCHOOL C&I
GABRIELLE HALL
EXECUTIVE DIRECTOR, HIGH SCHOOL C&I
CRYSTAL TAYLOR-SIMON

EXECUTIVE DIRECTOR, EQUITY
IWINOSA IDAHOR, Ph.D

EXECUTIVE DIRECTOR, EXCEPTIONAL CHILDREN'S SERVICES
KRISTIN BELL, Ed.D

EXECUTIVE DIRECTOR, RESEARCH AND ACCOUNTABILITY
ALBERT ROYSTER, Ed.D

EXECUTIVE DIRECTOR, INFORMATION TECHNOLOGY
JOY MALONE



SPECIALIZED SERVICES

**ASSISTANT SUPERINTENDENT
DEBORAH PITMAN, Ph.D.**

**ADMINISTRATIVE ASSISTANT
NIKKEYA MURCHISON**

**DIRECTOR,
STUDENT ASSIGNMENT
MELODY MARSHALL**

**DIRECTOR,
ENGLISH AS A SECOND
LANGUAGE
SASHI RAYASAM**

**DIRECTOR,
CAREER TECHNICAL
EDUCATION
DARIAN HARRIS**

**DIRECTOR,
MAGNET & CHOICE
PROGRAMS
DR. KENGIE BASS**

**DIRECTOR,
ARTS EDUCATION
LESTER TURNER**

**DIRECTOR,
EARLY EDUCATION
KAREN THOMPSON**

**DIRECTOR,
ATHLETICS, PE, AND
DRIVER'S EDUCATION
DAVID HACKNEY**

**DIRECTOR,
ADVANCED ACADEMICS
LAURA PARROT**

**COORDINATOR,
STUDENT ASSIGNMENT
TRANSITIONS
JOY BINGHAM**

**CUSTOMER SERVICE
SPECIALIST
VELINA JONES**
**MAGNET SCHOOL
TECHNICIAN
TANYA
HAWKINS-JOHNSON**
**STUDENT TRANSFER
TECHNICIAN
SANDRA SUITT**

**STUDENT RECORDS
MANAGER
DONNA HAMM**

**RECORDS TECHNICIANS
THWANDA SMITH-TILLEY
AMY BASS**

**COORDINATOR,
WHITTED PRE-K CENTER
LATOYA MCCRIMMON**

**COORDINATOR,
DRIVER'S EDUCATION
SUSAN CLEMENTS**

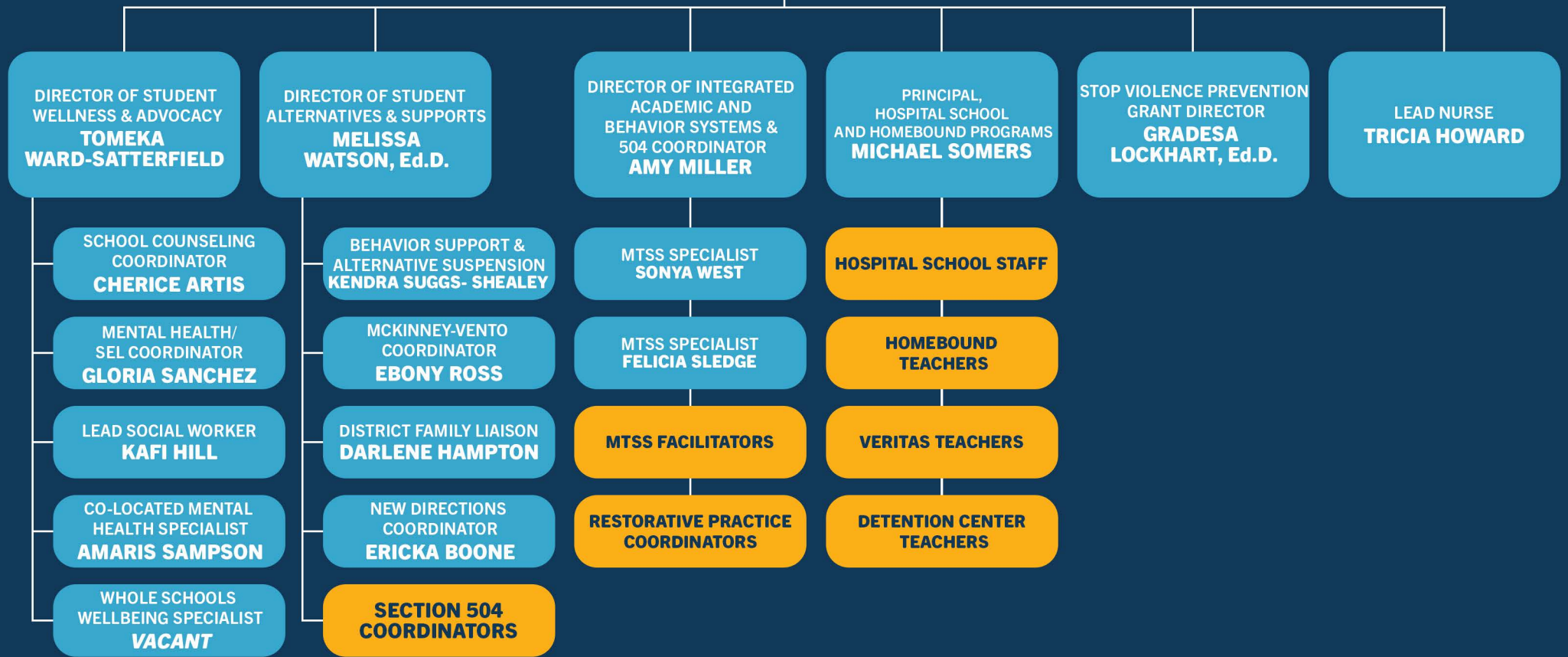
**COORDINATOR,
ADVANCED ACADEMICS
JAMEL
ANDERSON-RUFF**

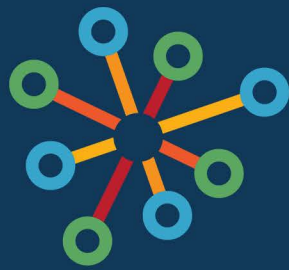


**SENIOR EXECUTIVE DIRECTOR,
 STUDENT SUPPORT SERVICES
 LAVERNE MATTOCKS-PERRY, Ed. D.**

**RECEPTIONIST
 KATHY CANADA**

**ADMINISTRATIVE ASSISTANT
 ASHLEY BALLARD**





K-12 CURRICULUM & INSTRUCTION

EXEC. DIRECTOR,
ELEMENTARY C&I
DR. LINDA TUGURIAN

EXEC. DIRECTOR,
MIDDLE SCHOOL C&I
GABRIELLE HALL

EXEC. DIRECTOR,
HIGH SCHOOL C&I
CRYSTAL TAYLOR-SIMON

ADMINISTRATIVE ASSISTANT
EMMANUEL GBEDEE

NCDPI EARLY
LITERACY SPECIALIST
KATHLEEN JAMES

**MEDIA COORDINATOR
LEADS - SCHOOL BASED**

**TEACHING &
LEARNING COACHES
SCHOOL BASED**

COORDINATOR OF
ACADEMICS
VACANT

DIRECTOR OF HUMANITIES
**DR. CICILY
MCCRIMMON**

DIRECTOR OF MATHEMATICS
& SCIENCE
LIZ MOFFITT

DIRECTOR OF DIGITAL
TEACHING & LEARNING
RONALD WAHLEN

ENGLISH LANGUAGE
ARTS SPECIALISTS
**SARAH MOON, K-5
BETH SPATARO, 6-8
HEIDI PEREZ, 9-12**

MATHEMATICS SPECIALISTS
**STEVEN HARRISON, K-5
STEPHANIE BROCK, K-5
ALINA CASTILLO, 6-12
KENYA LAWRENCE, 6-12**

DIGITAL TEACHING &
LEARNING COACHES
**SHANIQUA HOOD
KENNETHA HOPKINS
VACANT**

LITERACY INTEGRATION
FACILITATORS
**DANIELLE HOWARD,
K-2 LITERACY**

DISTRICT MATH COACH
KENYA LAWRENCE, 9-12

eLEARNING COORDINATOR
ALLYN SIMON

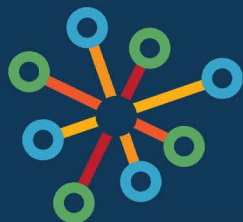
COORDINATOR OF DLI &
GLOBAL LANGUAGES
VICTOR HIRALDO

SCIENCE SPECIALISTS
**AMANDA BOWERS, K-5
EMMA REFVEM, 6-12**

TECHNOLOGY INTEGRATION
SPECIALIST
JERRY WILLIAMSON

SOCIAL STUDIES SPECIALIST
**CHARLENE
MARTIN-KLEIN, K-12**

PART TIME
DISTRICT COACHES
TERRI RAY, 6-8 SCIENCE



EXCEPTIONAL CHILDREN

**EXECUTIVE DIRECTOR,
EXCEPTIONAL CHILDREN'S SERVICES
KRISTIN BELL, Ed. D.**

**DATA ANALYST/ECATS
ROSEMARY MILLER**

**TREASURER
SHENISE STEWART**

**ADMINISTRATIVE ASSISTANT
TAMMY KNUDSEN**

**DIRECTOR, PRE-K EC
APRIL WASHINGTON**

**DIRECTOR, ELEMENTARY EC
WENDY VAVROUSEK**

**DIRECTOR, SECONDARY EC
VACANT**

**EC DIRECTOR
SPECIAL PROGRAMS &
BEHAVIOR SUPPORT
KRISTA SAUNDERS**

EC LEADS

**SCHOOL PSYCHOLOGY
WAYDE JOHNSON**

**LEAD TEACHER OF
BLIND/VISUALLY IMPAIRED
BRYAN WATERS**

**ADAPTED PE
STACI SHARP**

**LEAD BLIND/VISUALLY
IMPAIRED
DENISE NELSON**

**SPEECH LANGUAGE
PATHOLOGY
TAHISHA BISHOP**

**AUDIOLOGY
NICOLE JONES
SHELBY ROITHMAYR**

**PHYSICAL THERAPY
SHERYL BROADRIGHT**

**DEAF/HARD OF HEARING
INDIA DAVIS
SHAKIRA ANDERSON**

**OCCUPATIONAL THERAPY
LENORE CHAMPION**

**ASSISTIVE TECHNOLOGY
TONJA RECKTENWALD**

**ASSISTANT LEAD SIGN
LANGUAGE INTERPRETER
CHARLES STORES**

**FOREIGN LANGUAGE
INTERPRETER
MELINDA LANE**

**BEHAVIOR
SUPPORT SPECIALIST
VACANT**

**ADAPTED
CURRICULUM SPECIALIST
LORI PLATKO**

**ADAPTED
CURRICULUM SPECIALIST
KELLY ROBERTS**

**ADAPTED
CURRICULUM SPECIALIST
MONIQUE BONNER**

**VOCATIONAL SPECIALIST
CHRISTOPHER
NORWOOD**

**EC BEHAVIOR
TECHNICIANS**

**SEE PAGE 2 FOR
FULL PRE-K EC
CHART**

**ELEMENTARY
LEAD EC FACILITATOR
ELAINA BRADLEY**

**SECONDARY
LEAD EC FACILITATOR
JAMIE BOWERS**

**ELEMENTARY INCLUSIVE
PRACTICES SPECIALIST
AJALYN BAKER**

**SECONDARY INCLUSIVE
PRACTICES SPECIALIST
AMBER CLINE-RABAH**

**ELEMENTARY
EC FACILITATORS**

**SECONDARY
EC FACILITATORS**



EXCEPTIONAL CHILDREN

PRE-K CHART

DIRECTOR, PRE-K EC
TINA CLAYTON

EC INSTRUCTIONAL
COORDINATOR
BEATRICE SPRINGS

COORDINATOR,
CHILD FIND INTAKE
LESLIE GREENE

**THREE PRESCHOOL
ASSESSMENT TEAMS**
(PURPLE TEAM, GREEN TEAM,
BLUE TEAM)

EXCEPTIONAL CHILDREN
FACILITATORS
MELISSA ANDERS
RENEE HARRIS

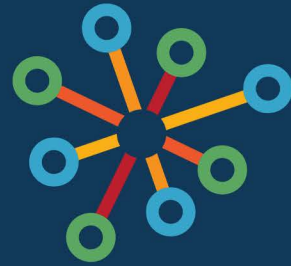
ITINERANT TEACHERS
SARAH ASHLEY
ROSEMARIE BAKER
LYNDA COATES
TA'STACIA COVINGTON
TENISHA CROMARTIE
LAMISA DUMAS
LORI HOLDER
LATITIA LILES
MELISSA NEAL
VACANT

SPEECH LANGUAGE
PATHOLOGISTS
BETHANY PERGERSON
RACHEL RHYNE

PSYCHOLOGISTS
CATHERINE BONEY
CARA STEINBURG

OCCUPATIONAL THERAPIST
MILISA DAPPER

PHYSICAL THERAPIST
SHERRY BROADRIGHT



EARLY EDUCATION

**DIRECTOR,
EARLY EDUCATION
KAREN THOMPSON**

**ADMINISTRATIVE ASSISTANT
FRANCHESCA DAYE**

**PRESCHOOL
INSTRUCTIONAL COACHES
VACANT
QUSHANNA GLASS**

**UNIVERSAL PRE-K
FACILITATOR
LAMISA CAMERON**

**WHITTED PRE-K CENTER
COORDINATOR
LATOYA MCCRIMMON**

**TRANSITION TO
KINDERGARTEN FACILITATOR
SHEWAHN LEE**



WHITTED SCHOOL

**DIRECTOR, EARLY LEARNING
KAREN THOMPSON**

**PRINCIPAL
DR. LATOYA MCCRIMMON**

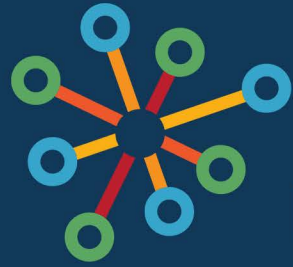
**TREASURER
SHANNON CERES**

TEACHERS

**SHAHLAA ABUGROUN
GEORGETTE TWITTY
ASHAWNTA HOCKADAY
HEIDI BELL
DANIEL MABINI
ASHLEY EATMON
GWENDOLYN WHITLEY
KAREN CRAIG
MELISSA EIMER**

TEACHER ASSISTANTS

**SHAENA JONES
JASMINE PATILLO
SUZAN BELVIN
MICHELE D WRIGHT
SHARLENE CAMERON
SASHA HUMPHREY
TIFFANY WOODS-CAMERON
CAROL NIXON
LAUREN BRIGGS
VACANT**



ENGLISH LEARNER SERVICES

DIRECTOR
SASHI RAYASAM

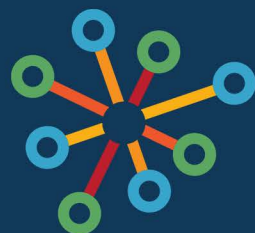
ADMINISTRATIVE ASSISTANT
DANIELLE DUNKER

**ESL REGISTRATION
AND TESTING**
MARTHA GENSEMER-RAMIREZ
NIKOS CHREMOS
LORENA LOPEZ ALAS
LUZ CATES

**BILINGUAL GRADUATION
COACHES**
MARIA JIMENEZ-SANCHEZ
KATTY NINO
KAREN KEIM
AVILAMAR BASTIDAS-CASTILLO

**EL INSTRUCTIONAL
FACILITATOR (ELEMENTARY)**
KATELIN MCCLURE

**EL INSTRUCTIONAL
FACILITATOR (SECONDARY)**
WENDY LOVE



DURHAM PUBLIC SCHOOLS
**OFFICE OF
EQUITY**

**SENIOR EXECUTIVE DIRECTOR,
EQUITY AFFAIRS AND
PROGRAM EVALUATION
IWINOSA IDAHOR, Ph.D**

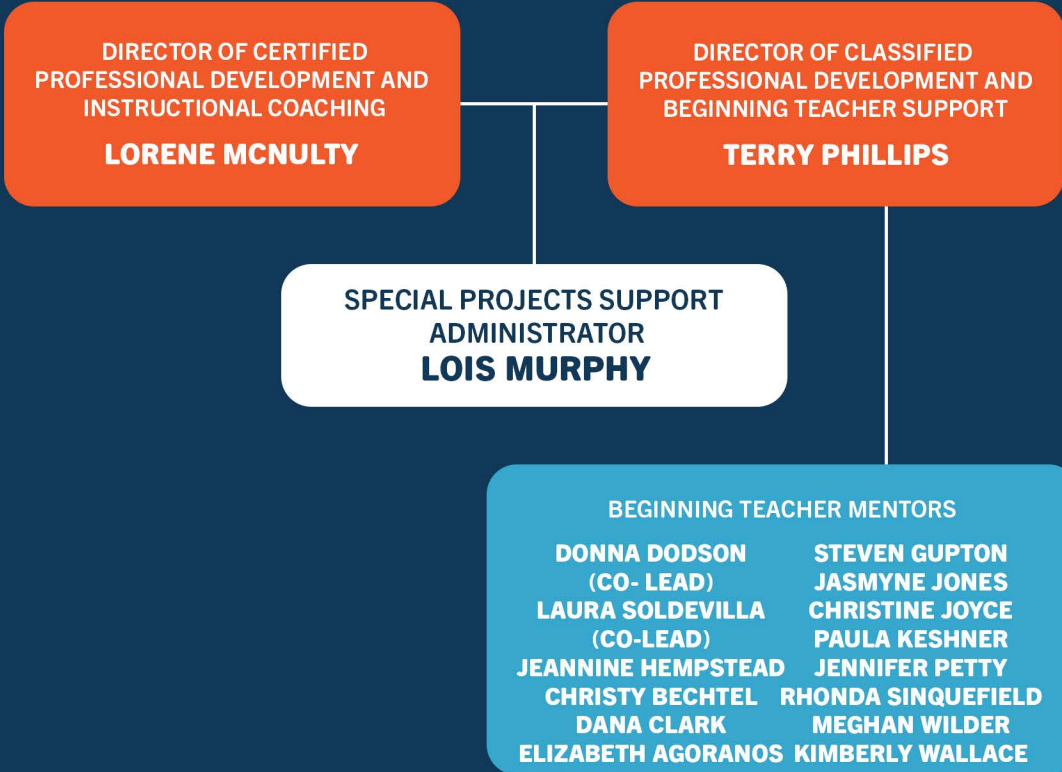
**SPECIAL PROJECTS SUPPORT
ADMINISTRATOR
LOIS MURPHY**

**STUDENT ENGAGEMENT &
OPPORTUNITY COORDINATOR,
EQUITY AFFAIRS
*VACANT***

**EQUITY LEADERSHIP & STRATEGY
COORDINATOR, EQUITY AFFAIRS
KEAUNDRA ROBINSON**



DURHAM PUBLIC SCHOOLS
**LEADERSHIP
DEVELOPMENT**





**EXECUTIVE DIRECTOR,
INFORMATION TECHNOLOGY
PAUL MIJUMBI (INTERIM)**

**ADMINISTRATIVE ASSISTANT
KRYSTAL MERRITT**

**DIRECTOR,
IT OPERATIONS
PAUL MIJUMBI**

**ASSET WAREHOUSE
MANAGER
VACANT**

**DIRECTOR, IT SUPPORT
ANGELA ATKINSON**

**ENTERPRISE
APPLICATIONS**
DATA WAREHOUSE
MANAGER
BARISO SORA
DATA WAREHOUSE
DEVELOPER
**DEEPTI
CHERUKUWADA**

**SYSTEMS
ADMINISTRATION**
JR. SYSTEMS ADMIN
MORCIRE BANGIURA
JR. SYSTEMS ADMIN
CALVIN NG
SYSTEMS ADMIN
REYMAN PEJERA
SYSTEMS ADMIN
AJEESH CHERIN

**NETWORK
INFRASTRUCTURE**
JR. NETWORK ENGINEER
ALEX SURH
NETWORK ENGINEER
OMAR PERKINS
NETWORK ENGINEER
SCOTT WILLIAMS

**IT PROJECT MANAGER
ANYA ZEIDMAN**

IT ASSET CONTROL
WAREHOUSE TECHS
**BONFACE
GILBERT (TIER I)**
**AUGUSTUS
SIKO (TIER I)**

AUDIO VISUAL
SR. AUDIO VISUAL
TECHNICIAN
JAVIN GRIFFIN
AUDIO VISUAL TECHNICIAN
SHATASHA BONEY

SUPPORT TEAM
TIER III
**ANTHONY MERRITT
MISAEEL CRUZ**
TIER II
**PAUL SALDANA
KENDELL PHILLIPS
ANDREW BUHRMEISTER
NASIBA CHARYYEVA
GINKA NWOKO**
TIER I
**REUBEN AHUKANNA
KeANDRA WALKER
JARED BONEY
ERICK HUSTON
JALYN CHERRY
KENDRICK PARRISH
CHRISTOPHER PERRY
DELVEON WOODS**

***CONTRACT/CONSULTANT/TEMP WORKERS MAY BE ASSIGNED TO SUPPORT IN SOME AREAS.**